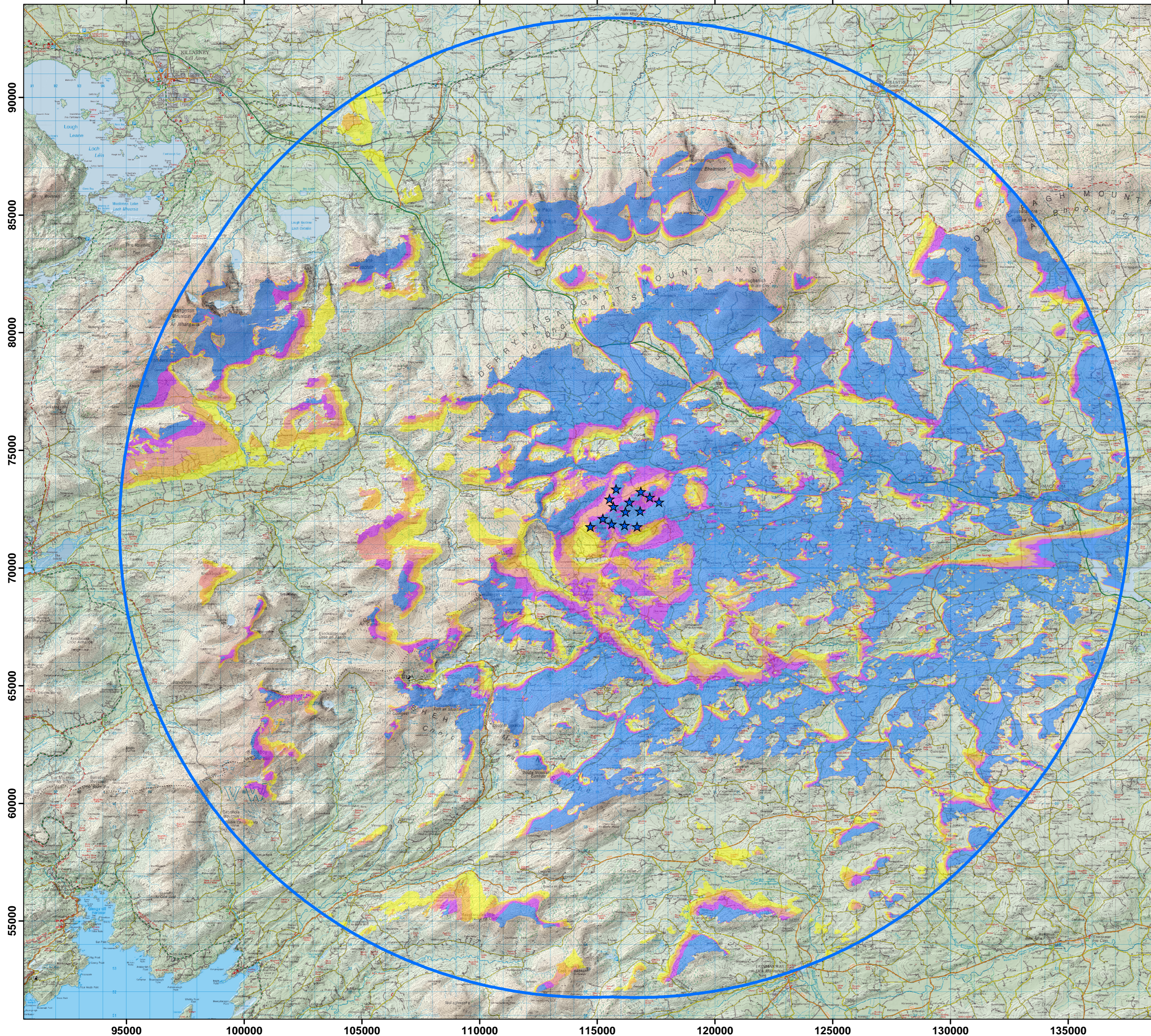


**Figure 12.3 ZTV (Zone of Theoretical Visibility) indicating the areas that have a potential view of Gortyrhilly Wind Farm turbines at 185m Tip Height**



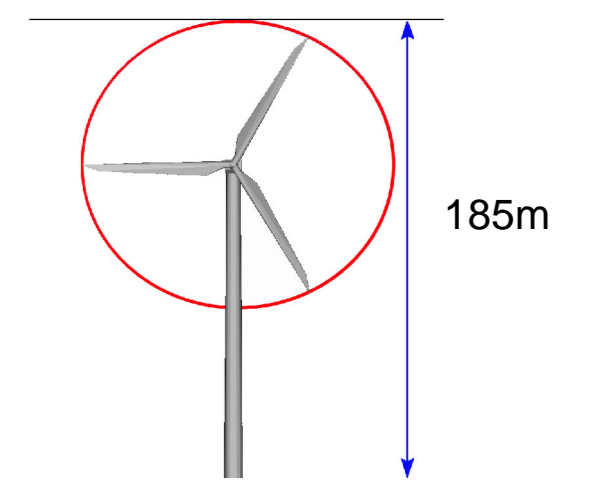
Proposed Gortyrhilly Turbines



No. Turbines Visible



20km Extent



This ZTV map has been calculated such that a turbines as been theoretically visible to observers in the surrounding landscape once there is an unobstructed line of sight to its blade tips.

Observer Height assumed: 1.7m to eye-level height  
Tip Height: 185m

Note: This ZTV map is calculated for landform screening only and does not take account of the significant screening effects of vegetation (hedgerows, trees) and buildings inherent across the study area.

